

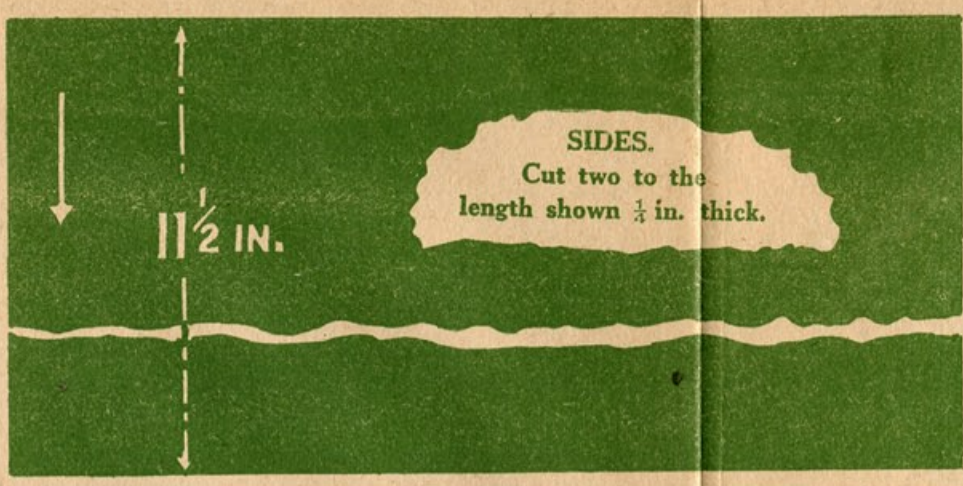
For Prices of Wood and Fittings see current Catalogue, or on application.

The \rightarrow indicates direction of grain of wood.

CONE SPEAKER

USING THE "LISSEOLA" UNIT & THE SPECIAL SIX-SIXTY PAPER FOR FORMING THE CONE SPEAKER.

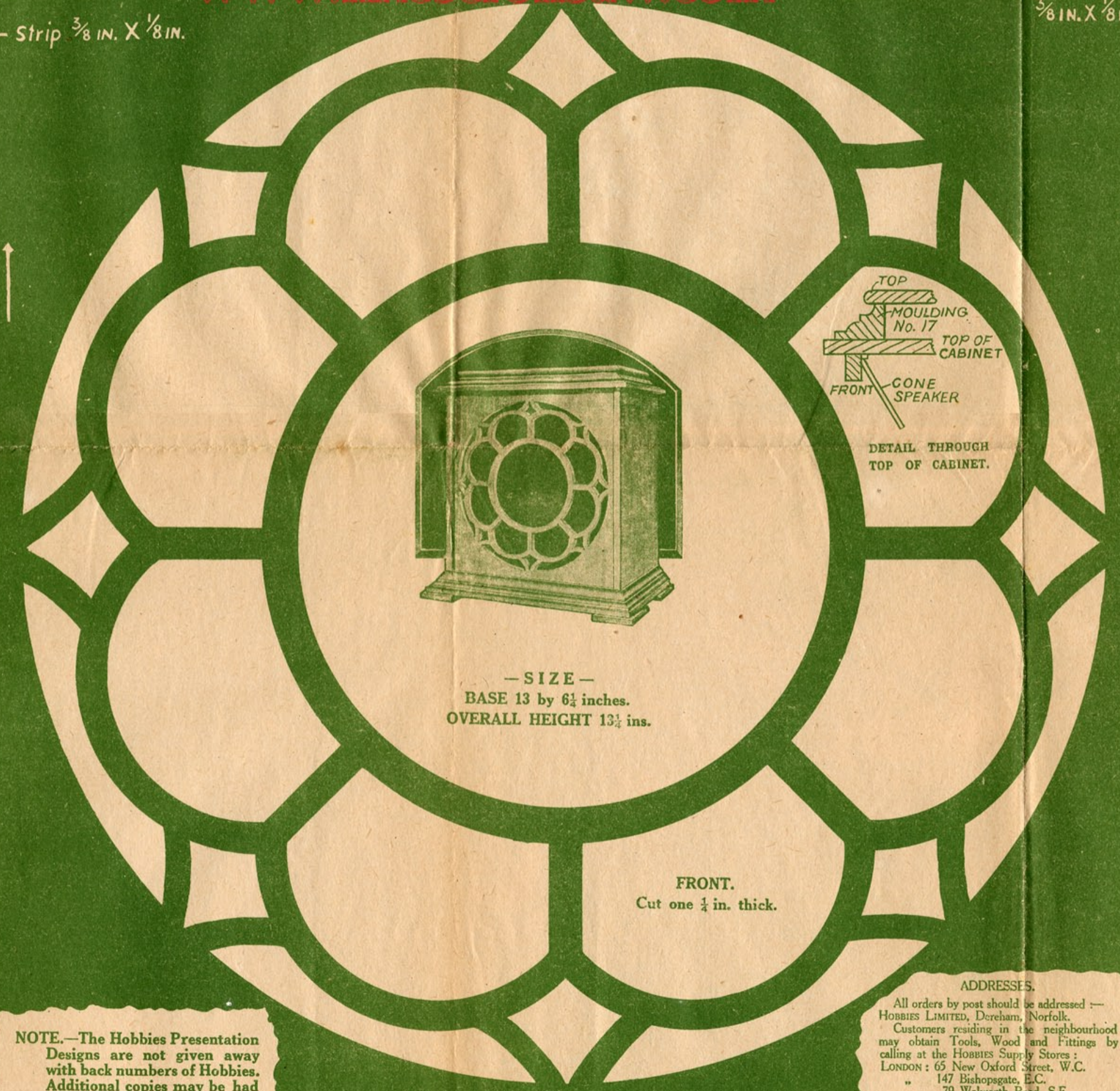
PRINTED IN ENGLAND.



www.finescrollsaw.com

Strip $\frac{3}{8}$ IN. X $\frac{1}{8}$ IN.

Strip $\frac{3}{8}$ IN. X $\frac{1}{8}$ IN.



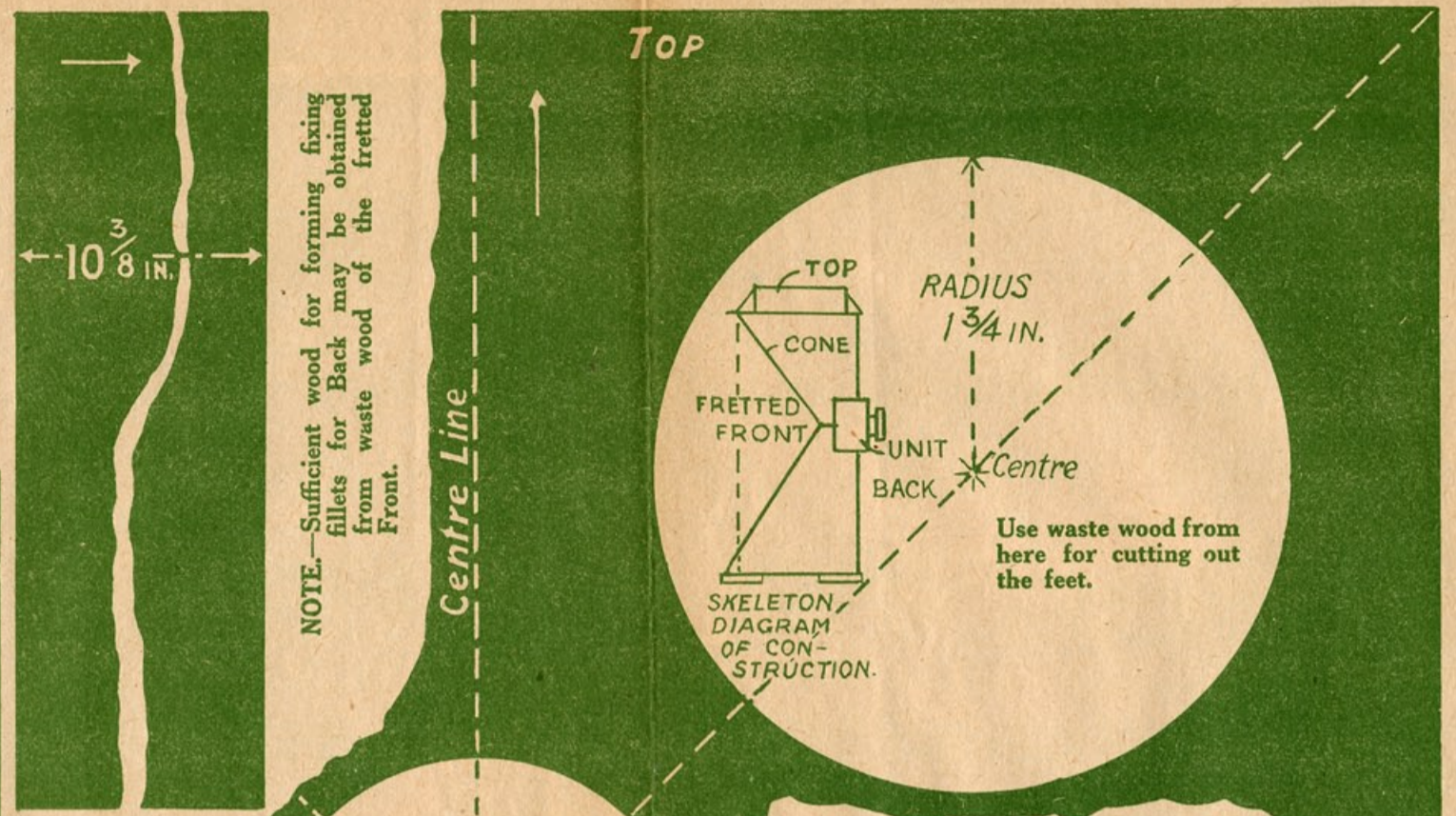
— SIZE —
BASE 13 by $6\frac{1}{2}$ inches.
OVERALL HEIGHT $13\frac{1}{2}$ ins.



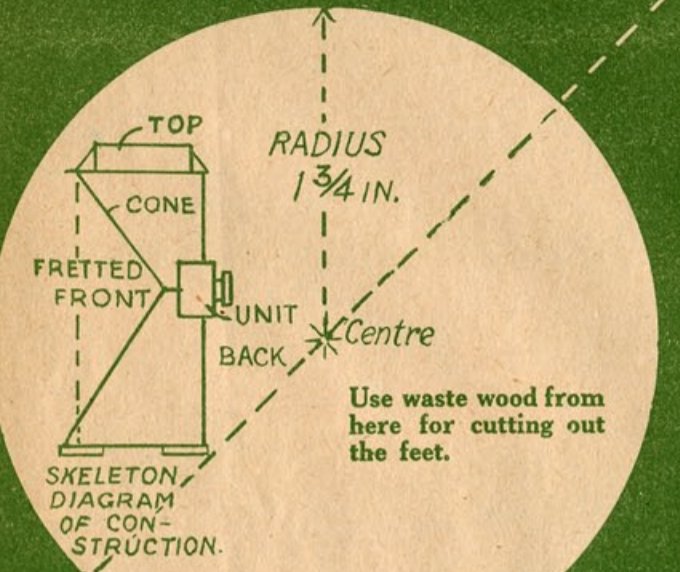
NOTE.—The Hobbies Presentation Designs are not given away with back numbers of Hobbies. Additional copies may be had from Hobbies Limited.

ADDRESSES.
All orders by post should be addressed to: Hobbies Limited, Dereham, Norfolk.
Customers residing in the neighbourhood may obtain Tools, Wood and Fittings by calling at the Hobbies Supply Stores:
LONDON: 65 New Oxford Street, W.C.
" 147 Bishopsgate, E.C.
" 79 Walworth Road, S.E.
GLASGOW: 326 Argyle Street.
MANCHESTER: 10a Piccadilly.
BIRMINGHAM: 9a High Street.
LEEDS: 89a Woodhouse Lane.
SOUTHAMPTON: 25 Bernard Street.
BRIGHTON: 68 London Road.
SHEFFIELD: 214 West Street.
TORONTO: 385 1/2 Yonge Street.
And of all Hobbies Authorized Agents.

Moulding No. 17



NOTE.—Sufficient wood for forming fixing fillets for Back may be obtained from waste wood of the fretted Front.



Top above moulding. Cut one to length shown $\frac{1}{4}$ in. thick.

For proper method of fixing the "Lissenola" unit see special instructions in "Hobbies" of above date.

Hole made for "Lissenola" unit.

Centre Line for unit



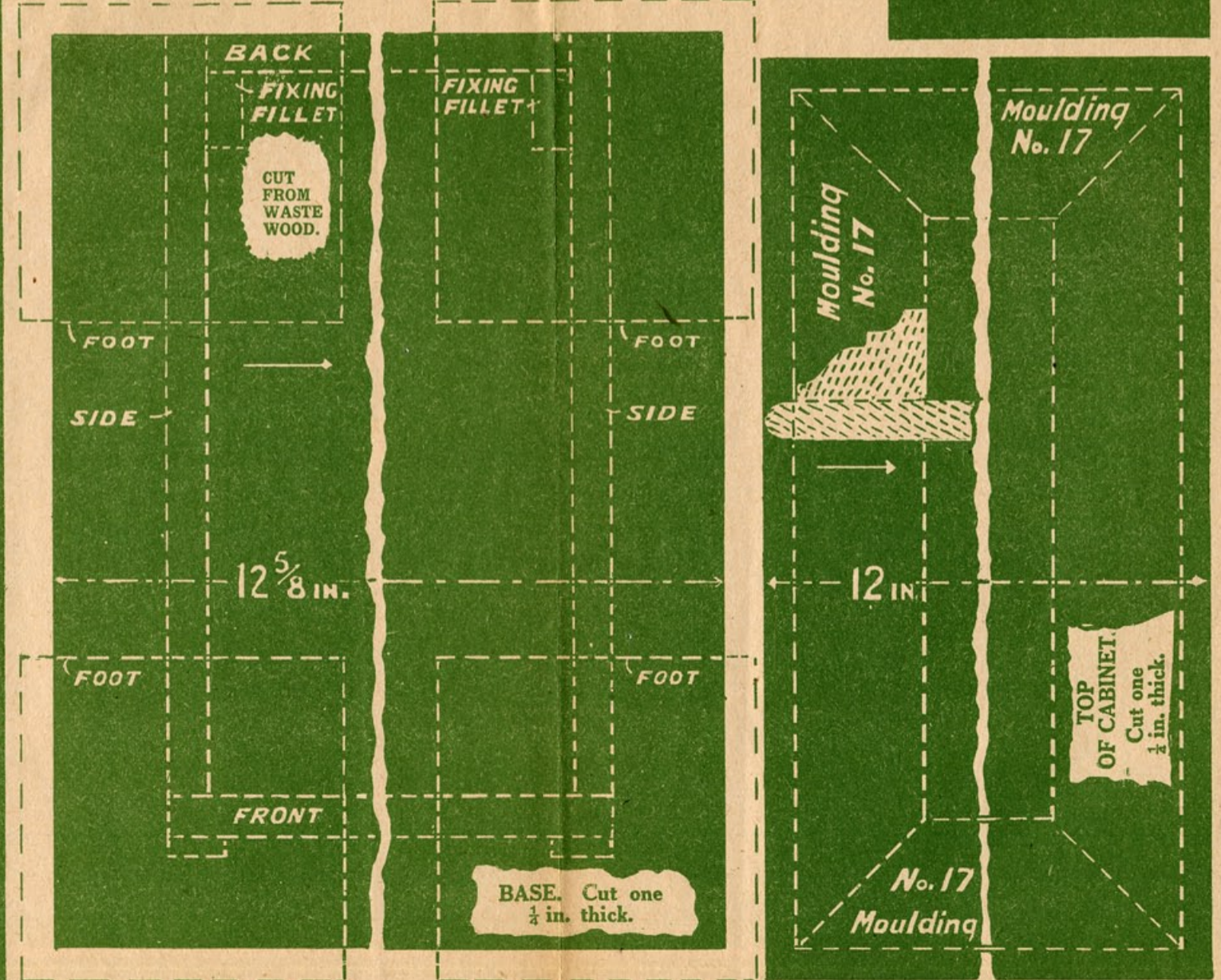
Moulding No. 17.

2 PIECES 13 in. LONG FOR BASE
3 " 12 in. " " TOP.

BACK. QUARTER ONLY SHOWN. Cut one $\frac{1}{4}$ in. thick. The four large circles may be drawn direct on to the panel of wood the centres being pricked off according to the diagram given above.

FEET. Cut four $\frac{1}{4}$ in. thick using up waste wood from circles cut from back.

TWO STRIPS $\frac{3}{8}$ in. X $\frac{1}{8}$ in. 12 in. LONG REQUIRED FOR FRONT.



BASE. Cut one $\frac{1}{4}$ in. thick.

TOP OF CABINET. Cut one $\frac{1}{4}$ in. thick.

No. 17 Moulding