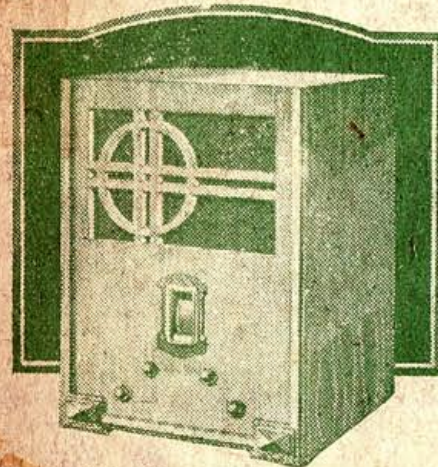


Supplement to Hobbies No. 1987

RADIO-CABINET

Here is a handsome Cabinet of generous dimensions, allowing for the housing of a large Receiving set. No Panel is supplied, but a Base-board 15x10 3/8 ins. is included in the special parcel of wood.



FRETWOOD AND FITTINGS.

WOOD.—For making up the Cabinet a parcel of Spanish Chestnut is supplied, with Oak-faced Plywood for front, Deal for base and shelf, and strips for fixing. Also 2 No. 214 Ornaments. Price 11/3, carriage forward.

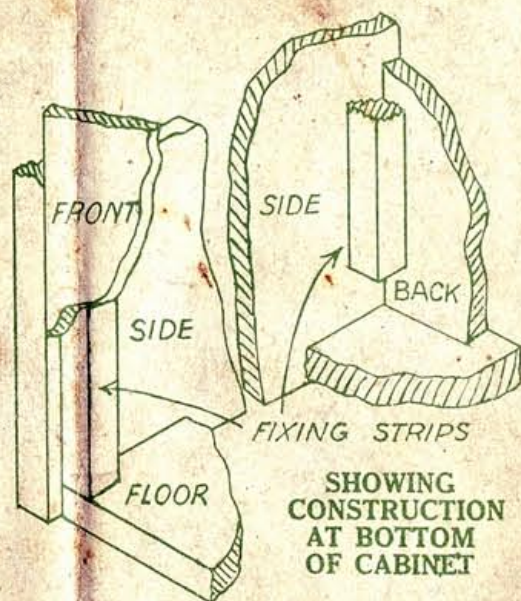
FITTINGS.—1 Piece Gold Gauze 15x10 ins., 1/3.

Complete parcel Wood and Fittings 12/6. Rail, carriage forward.

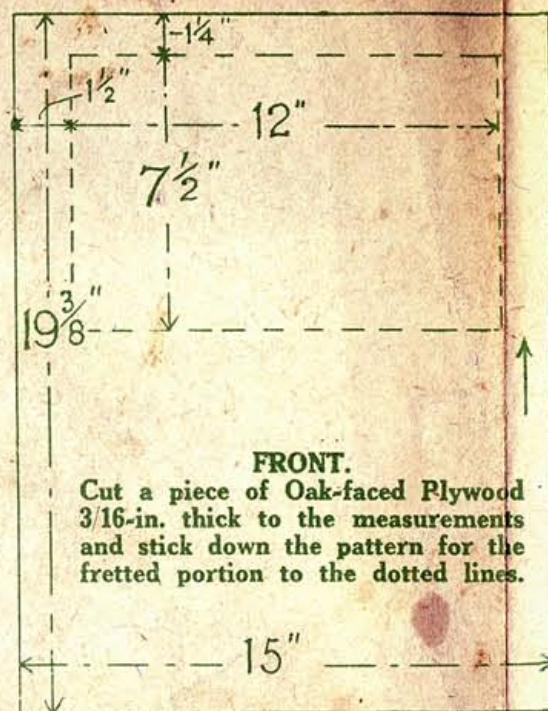
NOTE:—Extra copies of this design may be obtained from Hobbies Ltd.

The above prices are subject to alteration without notice.

SIZE
INTERNAL DIMENSIONS
HEIGHT - 19 in.
WIDTH - 15 in.
DEPTH - 10 in.

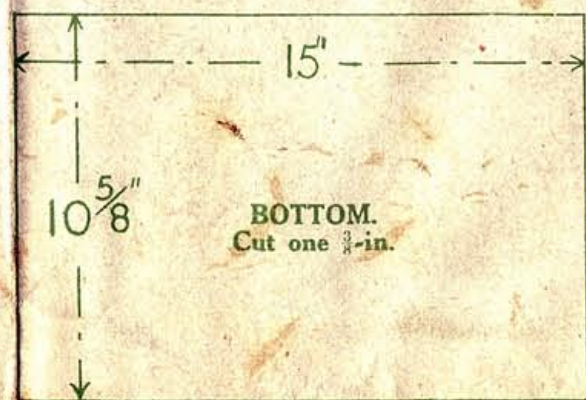


SHOWING CONSTRUCTION AT BOTTOM OF CABINET

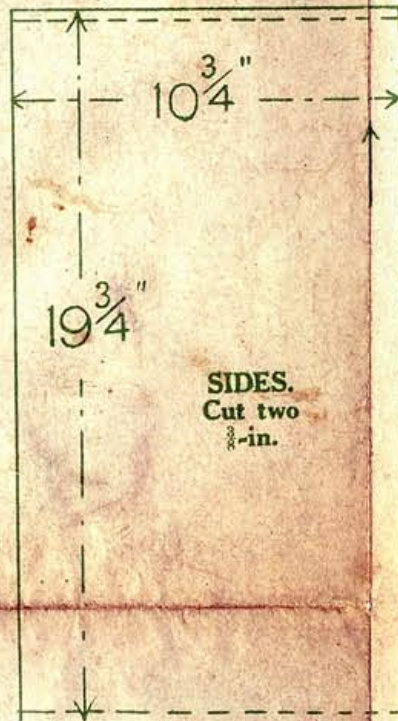


FRONT.
Cut a piece of Oak-faced Plywood 3/16-in. thick to the measurements and stick down the pattern for the fretted portion to the dotted lines.

BACK. Cut a piece of 3/16-in. Birch to the outline, but 19 in. long.



BOTTOM.
Cut one 1/2-in.



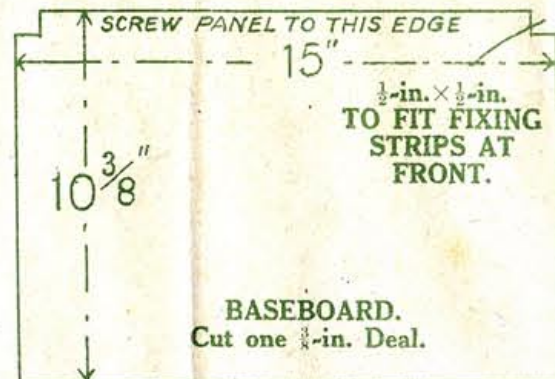
SIDES.
Cut two 1/2-in.

Base Strip.
Half only shown.
Cut one 1/2-in.

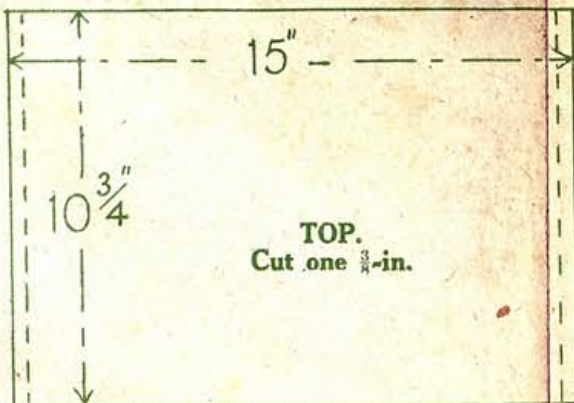
CENTRE LINE

Side Strips.
Cut two to the length shown 1/2-in.

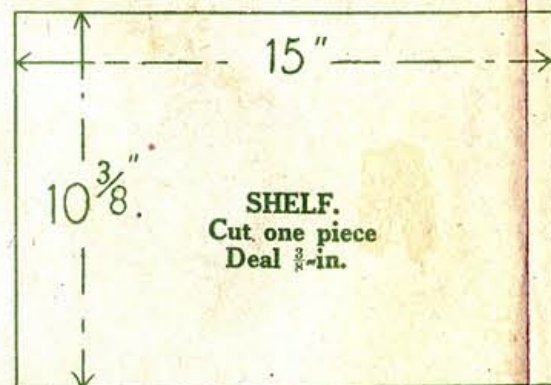
Overlays at Corners. Cut two 3/16-in.



BASEBOARD.
Cut one 1/2-in. Deal.

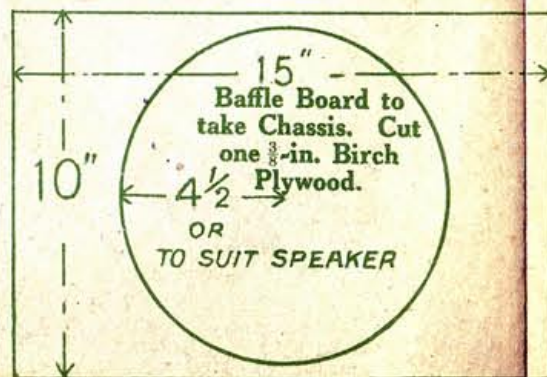


TOP.
Cut one 1/2-in.

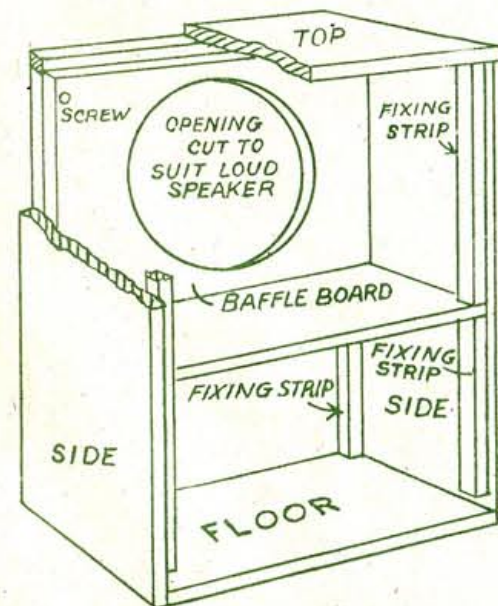


SHELF.
Cut one piece Deal 1/2-in.

Feet Sections.
Cut two to the length shown 1/2-in.
These pieces are to be fixed at each corner of Cabinet.



Pattern for Fretted Front.
Paste it down to the Plywood, the side and top edges being flush with the wood, as diagram above shows.



Showing interior construction, part side and top cut away, also back omitted.

Pedro López Rodríguez 2006
www.finescrollsaw.com

Deal Fixing Strips 1/2-in. square to which the Plywood Front and Back will be fixed.

2 Pieces 15 in long. Top.
4 " 18 in. " Sides.
2 " 10 in. " Shelf supports.

ADDRESSES.
All orders by post should be addressed—
HOBBIES LIMITED, Dereham, Norfolk.
Customers residing in the neighbourhood may obtain Tools, Wood and Fittings by calling at the HOBBIES Supply Stores.
LONDON: 16 New Oxford St., W.C.1
" 147 Bishopsgate, E.C.2
" 83 Newington Butts, S.E.11
GLASGOW: 326 Argyll Street.
MANCHESTER: 8 Piccadilly.
BIRMINGHAM: 94 High Street.
LEEDS: 10 Queen Victoria Street, Briggate.
SOUTHAMPTON: 25 Bernard Street.
BRIGHTON: 68 London Road.
SHEFFIELD: 4 St. Paul's Parade.
TORONTO, CANADA:
54 Wellington Street West.
And of all HOBBIES Authorized Agents.