

This design sheet is only presented free with the current issue of Hobbies and not with back numbers. Further copies may be obtained.

No. 2021
14-7-34

Hobbies DESIGN

PRICE 4D

Supplement to Hobbies No. 2021.

TEST MATCH CRICKET GAME



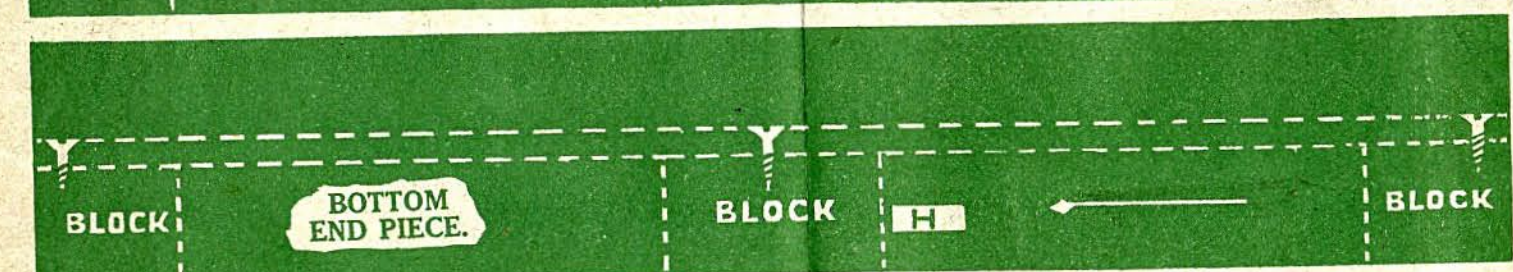
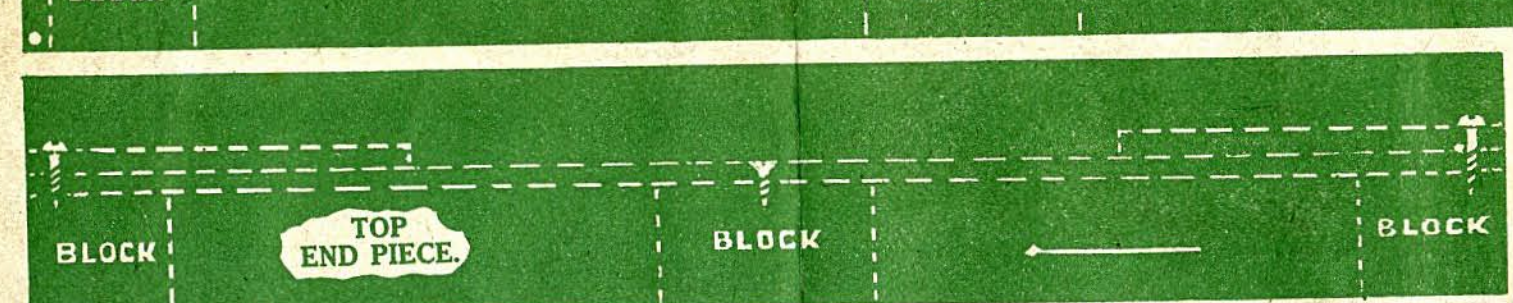
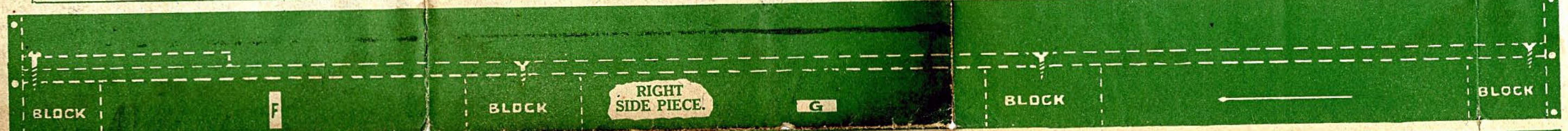
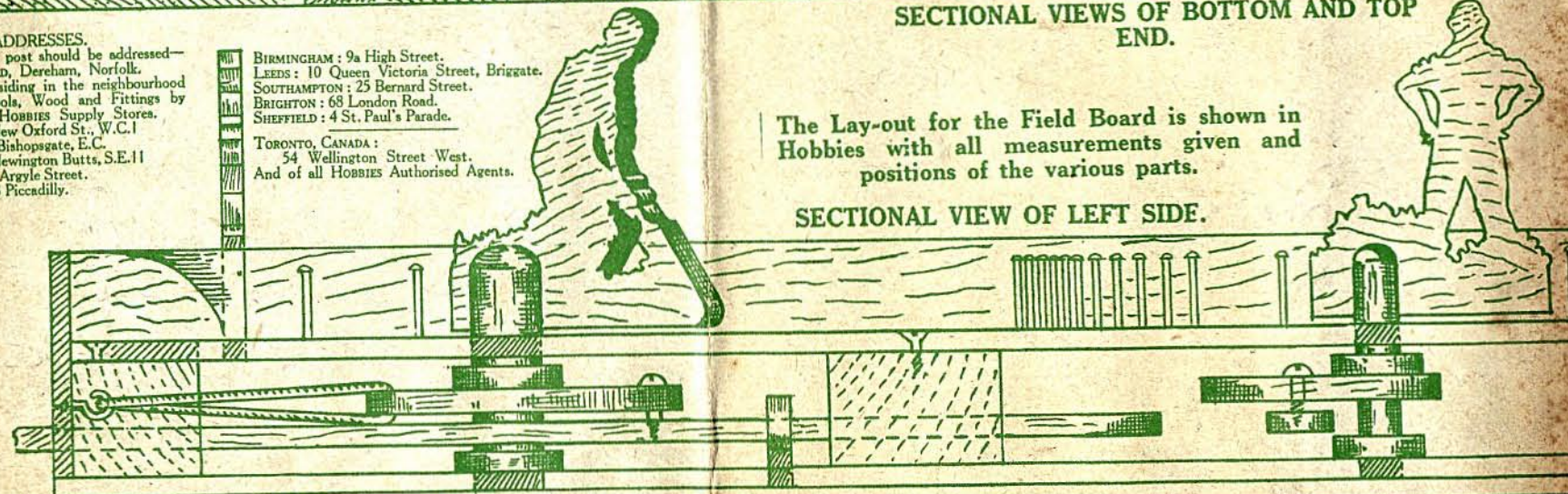
SECTIONAL VIEWS OF BOTTOM AND TOP END.

ADDRESSES.
All orders by post should be addressed—
Hobbies Limited, Dereham, Norfolk.
Customers residing in the neighbourhood may obtain Tools, Wood and Fittings by calling at the Hobbies Supply Stores.
LONDON: 167 New Oxford St., W.C.1
" 147 Bishopsgate, E.C.2
83 Newington Butts, S.E.11
GLASGOW: 326 Argyle Street.
MANCHESTER: 8 Piccadilly.

BIRMINGHAM: 9a High Street.
LEEDS: 10 Queen Victoria Street, Briggate.
SOUTHAMPTON: 25 Bernard Street.
BRIGHTON: 68 London Road.
SHEFFIELD: 4 St. Paul's Parade.
TORONTO, CANADA:
54 Wellington Street West.
And of all Hobbies Authorised Agents.

The Lay-out for the Field Board is shown in Hobbies with all measurements given and positions of the various parts.

SECTIONAL VIEW OF LEFT SIDE.



Note: The sides and end pieces are shown so that when finally assembled together, the green paper of the Design Chart (which will remain on the wood) will be to the inside.
This is also in regard to the small corner guides and especially the "Hobbies" Test Match Cricket Game pattern.
The Design, also, of course, will remain on all the statuette figures; to be coloured in by the worker, but the bushes can be coloured green.

FRETWOOD.—For making up the game a parcel of plywood with strips of Deal and round Rod is supplied ready for shaping.
1/3, post free 1/9.
FITTINGS.—3 metal hooks, 1 metal ball and 4 rubber feet, 6d., post free 7 1/2d.
A complete set, wood and fittings, 1/9, post free 2/3.

Fig. 6. TOP VIEW OF THE FIELD BOARD. Dotted lines indicate how the working parts are assembled inside.

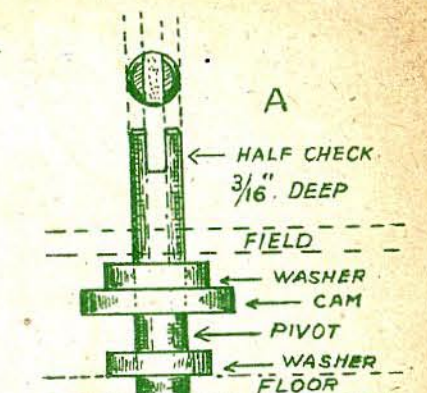
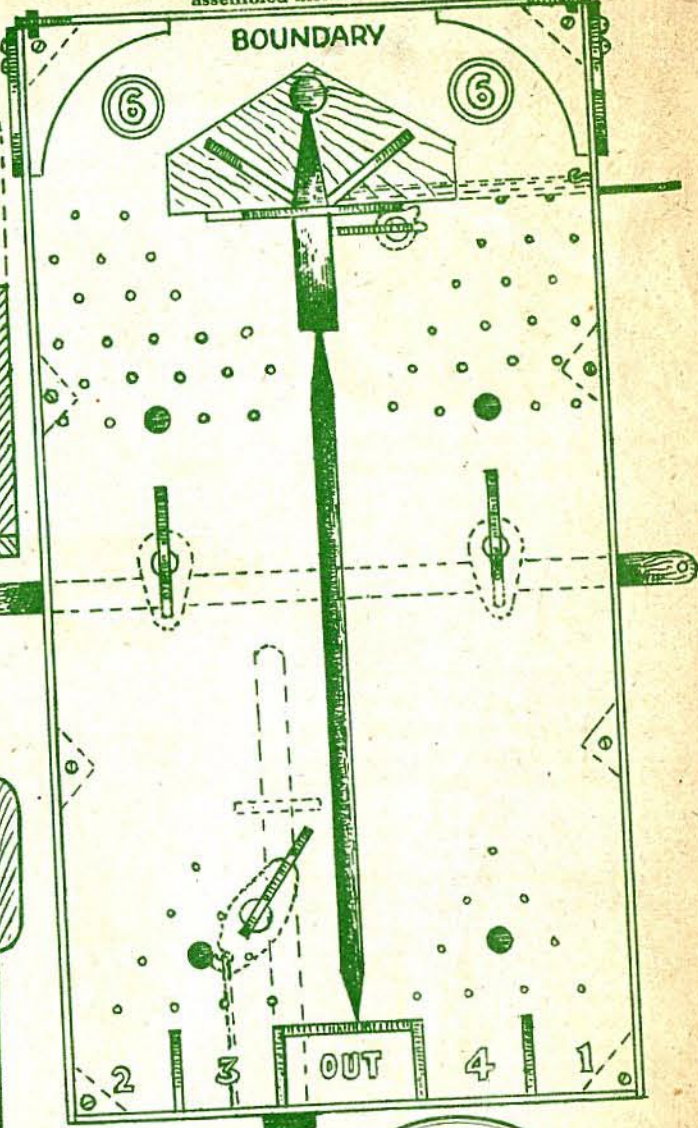
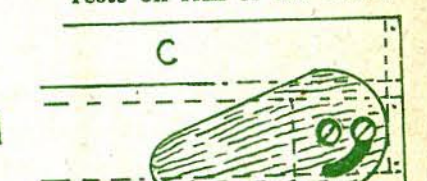
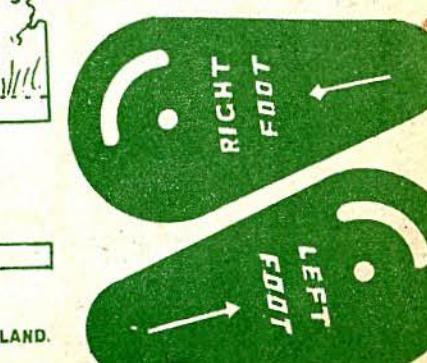
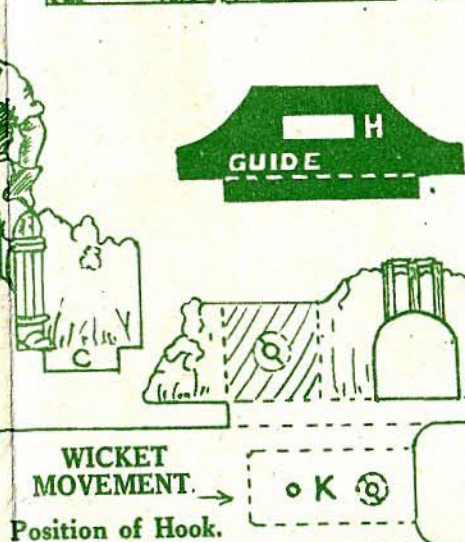


Fig. 1. Details of the dowel pivot and showing how the parts are glued.



Sectional detail of how the feet are attached to sides of board.



PRINTED IN ENGLAND.