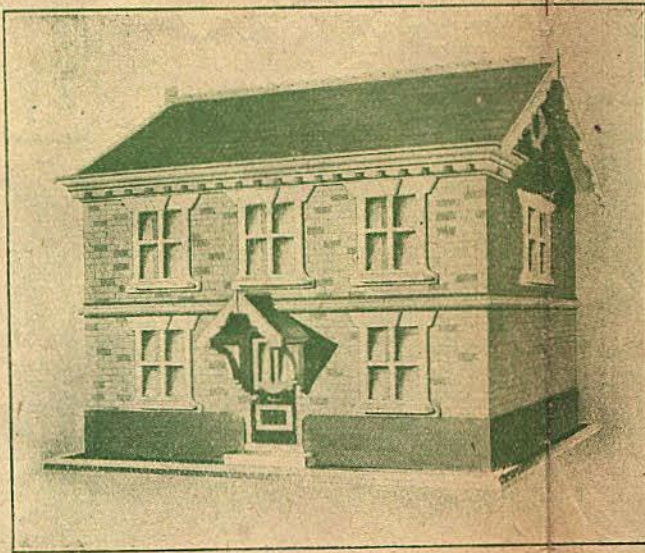


DOLL'S HOUSE.

Hobbies Special Design Sheet.
No. 133. (Copyright.) Price Ninepence.
Issued with HOBBIES No. 1377. 1-3-22.
Published at "HOBBIES" Office, 125, Fleet Street, London, E.C.

SCHEDULE OF PARTS. DOLL'S HOUSE. SPECIAL No. 133.

No.	Description.	No. of Thick- Pieces.	ness.	No.	Description.	No. of Thick- Pieces.	ness.
1	Base, Sides	2	1 in.	16	Porch Roof Slopes	2	1 in.
2	Ends	2	1 in.	17	Ridge	1	1 in.
3	Front of House	1	1 in.	18	Gable Boards to Porch	2	1 in.
4	Ends	2	1 in.	19	Door Step	1	1 in.
5	Back	2	1 in.	20	Overlay Behind Doorstep	1	1 in.
6	Roof Slopes	2	1 in.	21	Overlays on Front of	1	1 in.
7	Roof Ridge Piece	1	1 in.	22	House (above Ground	1	1 in.
8	Plinth Overlays on Front	2	1 in.	23	Floor Windows	2	1 in.
9	Plinth Overlays on Ends	2	1 in.	24	Overlays on Ends of House	2	1 in.
10	Window Frame Overlays	7	1 in.	25	(Mitred to No. 21)	2	1 in.
11	Keystone Overlays on No.	7	1 in.	26	Overlay behind Dentil	1	1 in.
12	Window Sills glued to No.	7	1 in.	27	Course, Front of House	1	1 in.
13	Door Overlay, Upper Glass	1	1 in.	28	Overlay behind Dentil	1	1 in.
14	Door Overlay, Lower Panel	1	1 in.	29	Course, Ends of House	2	1 in.
15	Brackets to Porch Roof	2	1 in.	30	Dentil Course Overlay,	1	1 in.
				31	Front of House	1	1 in.
				32	Dentil Course Overlay,	1	1 in.
				33	Ends of House	2	1 in.
				34	Overlay in Gable (1922)	1	1 in.
				35	Gable Boards to Main Roof	4	1 in.



Furniture to suit this Doll's House, drawn to scale to fit the various rooms, will be published at intervals. The first sheet, containing Hall and Dining Room Furniture will appear in "Hobbies" No. 1379, dated March 18th, 1922.

Fretwood.—For this design we supply a selected parcel of wood—Satin Walnut and White Overlay, with Spanish Chestnut for front, back and ends, including sufficient Nos. 17 and 18 Moulding—8s. 9d., post free 10s.

Fittings.—Nine pieces of glass and a pair of Brass Hinges—1s. post free 1s. 2d.

Postage 1s. 3d. on complete parcel.

The above prices are subject to revision without notice.

ADDRESSES.

All orders by post should be addressed:—HOBBIES LIMITED, Dereham, Norfolk.
Customers residing in the neighbourhood may obtain Tools, Wood and Fittings by calling at the HOBBIES Supply Stores:
LONDON: 65, New Oxford St., GLASGOW: 326 and 328, Argyll St., W.C.
" 147, Bishopsgate, E.C. MANCHESTER: 108, Piccadilly.
" 79, Walworth Rd., S.E. BIRMINGHAM: 94, High Street.
LEEDS: 15, County Arcade.
And of all HOBBIES Authorized Agents.

