

ADDRESSES.
All orders by post should be addressed to—HOBBIES LIMITED,
Dereham, Norfolk.
Customers residing in the neighbourhood may obtain Tools,
Wood and Fittings by calling at the Hobbies Supply Stores:
LONDON: 65, New Oxford St., GLASGOW: 326 and 328, Argyle
Street.
" 147, Bishopsgate, E.C. MANCHESTER: 10a, Piccadilly,
W.C. BIRMINGHAM: 9a, High Street.
" 79, Walworth Rd., S.E. LITTON: 15, County Arcade.
And of all Hobbies Authorised Agents.

ANTOFRET HALL STAND

Pedro López Rodríguez 2006
www.finescrollsaw.com

Hobbies Special Design Sheet.
No. 137. (Copyright.) Price Ninepence.
Issued with HOBBIES No. 1416. 2p 12-22.
Published at "HOBBIES" Office, 125, Fleet Street, London, E.C.

The ————— indicates direction of grain of wood.

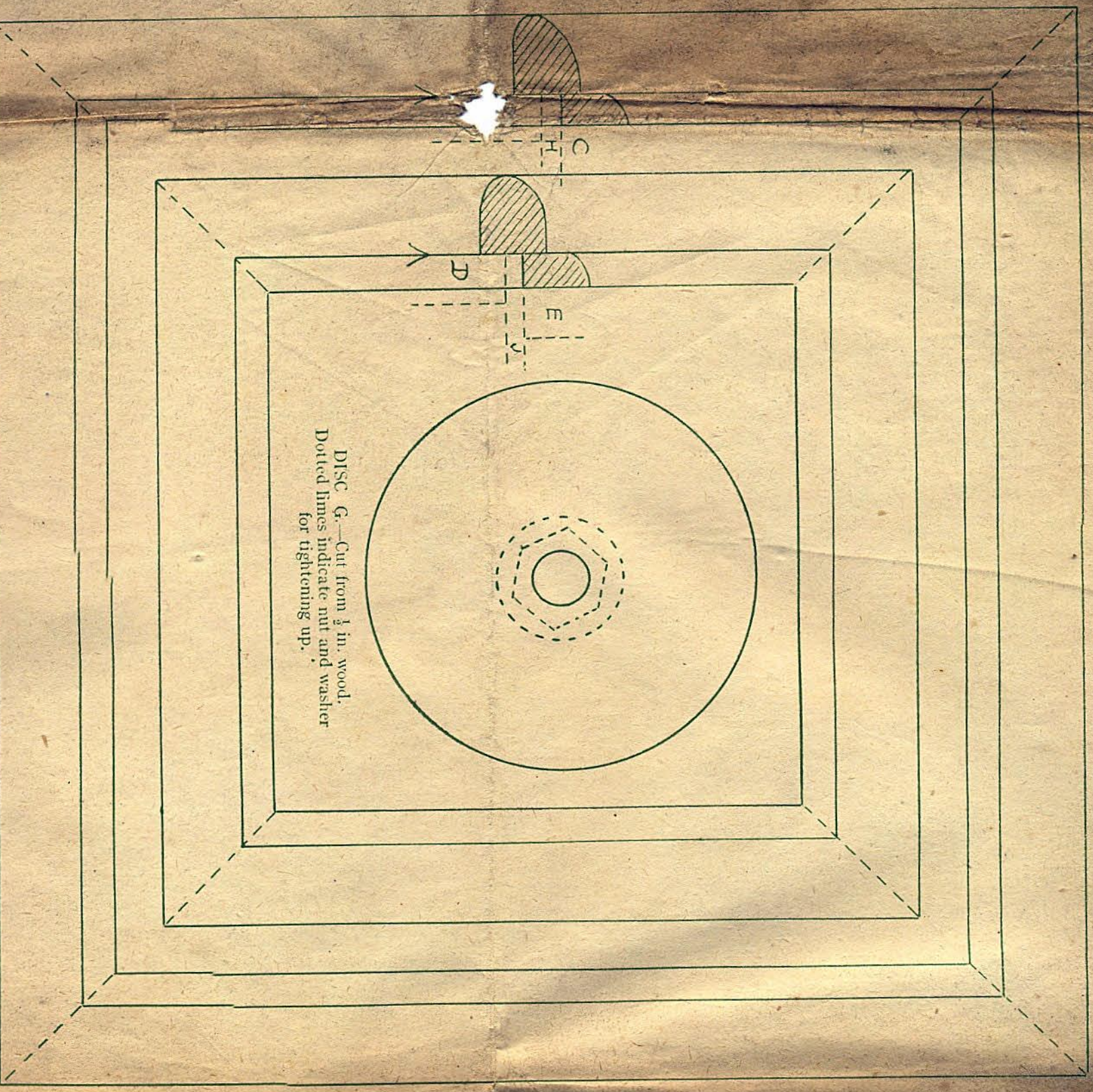
Fretwood.—For this design we supply a specially-selected
piece of Mahogany, with parts shaped and mitred
ready for fixing together—30s. rail carriage forward.
Fittings.—Metal Rod, with Washer and Nuts for fixing
stand together—2s. 6d. 8 Hat and Coat Hangers—
4s. per set. Post free 4s. 9d.
The above prices are subject to revision without notice.



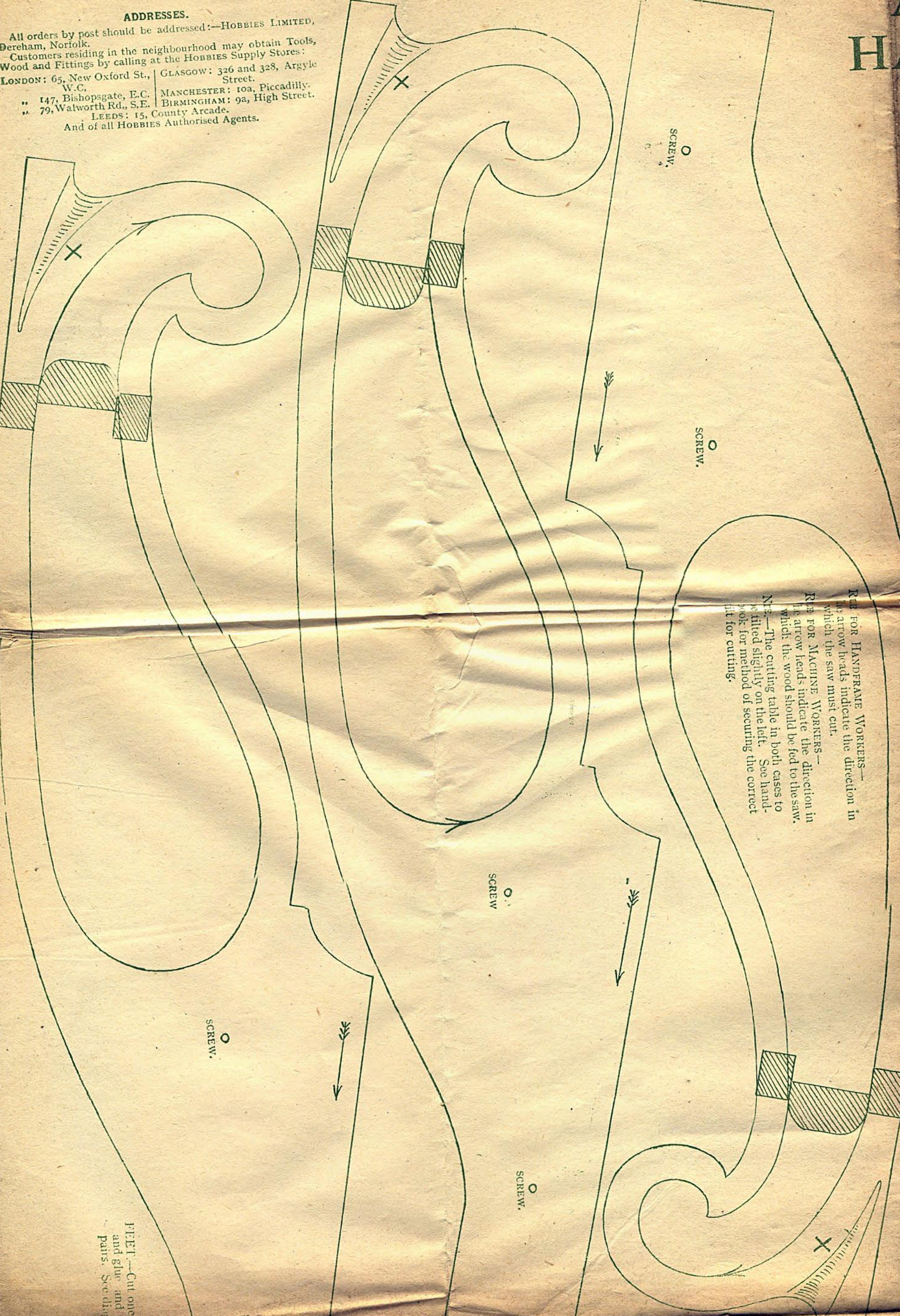
SCALE DIAGRAM OF SIDES. We
supply the pieces of wood in the
shape and with edges chamfered ready
for assembling.



NECKINGS.—Cut from 1/2 in. wood and shaped according to section.
Dotted lines indicate position of sides of stand.

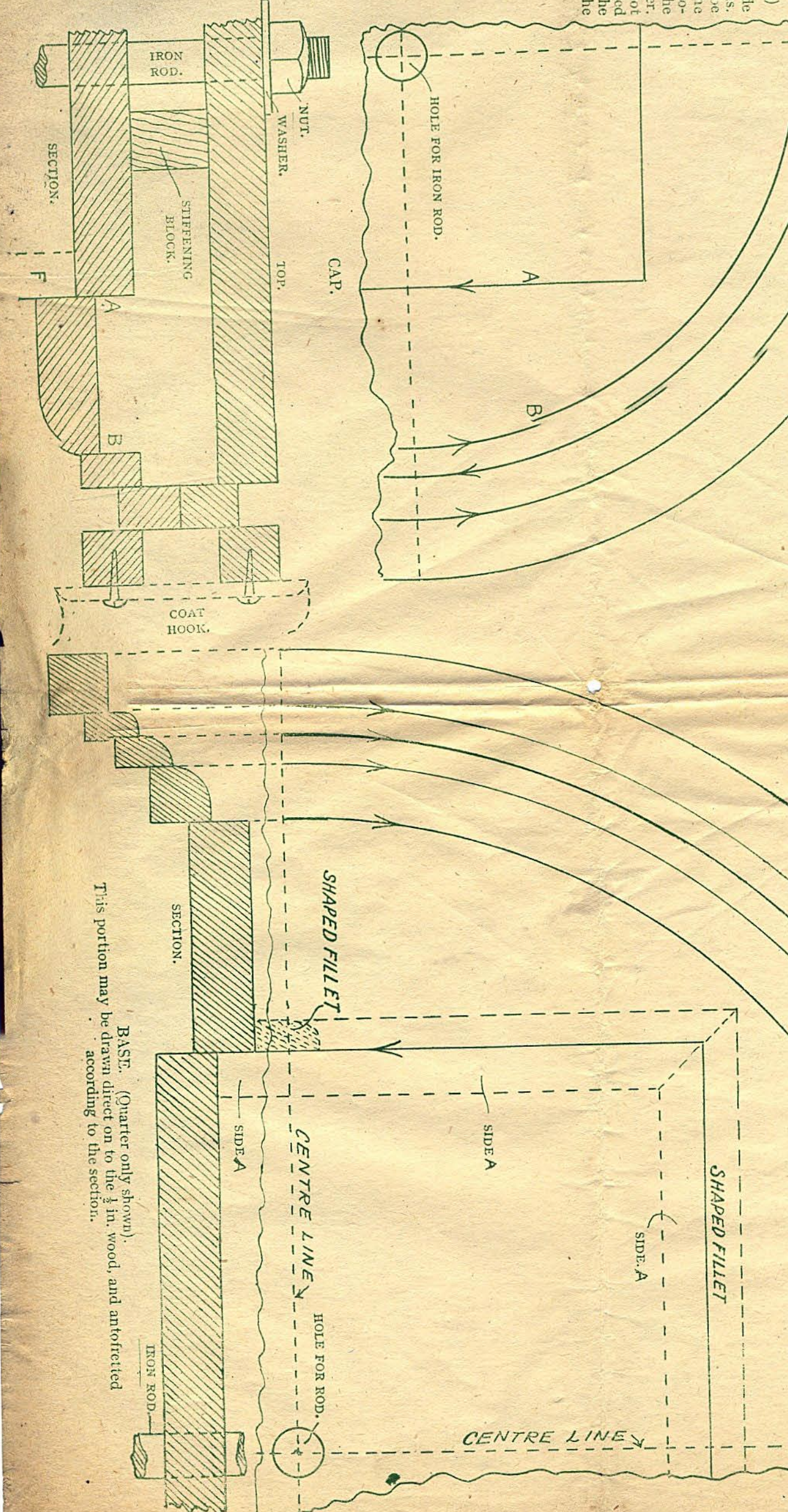


KEY FOR HANDYMAN WORKERS—
The arrows indicate the direction in
which the saw must cut.
Rear row shows the direction in
which the wood should be fed to the saw.
X.—The cutting table in both cases to
be mitred slightly on the left. See hand-
book for method of securing the correct
fit for cutting.

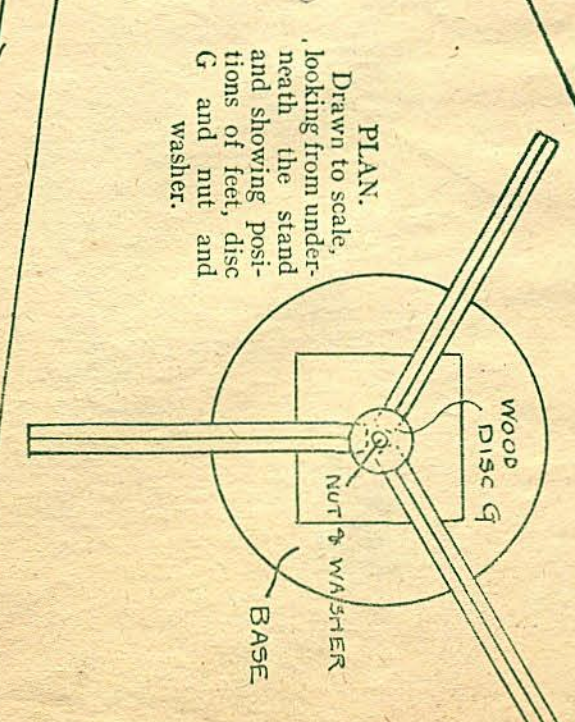
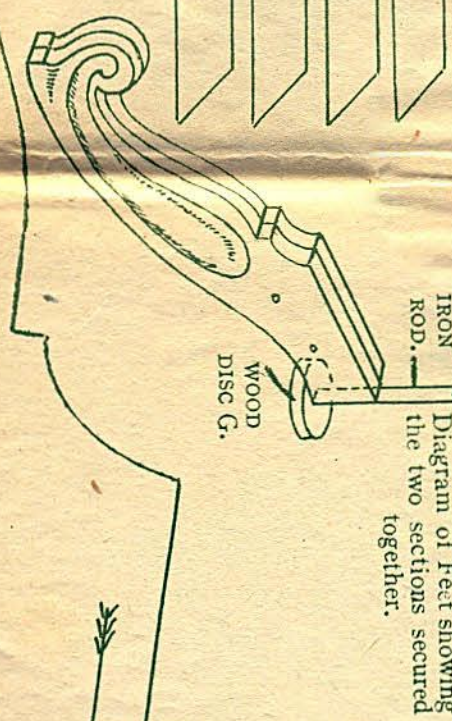
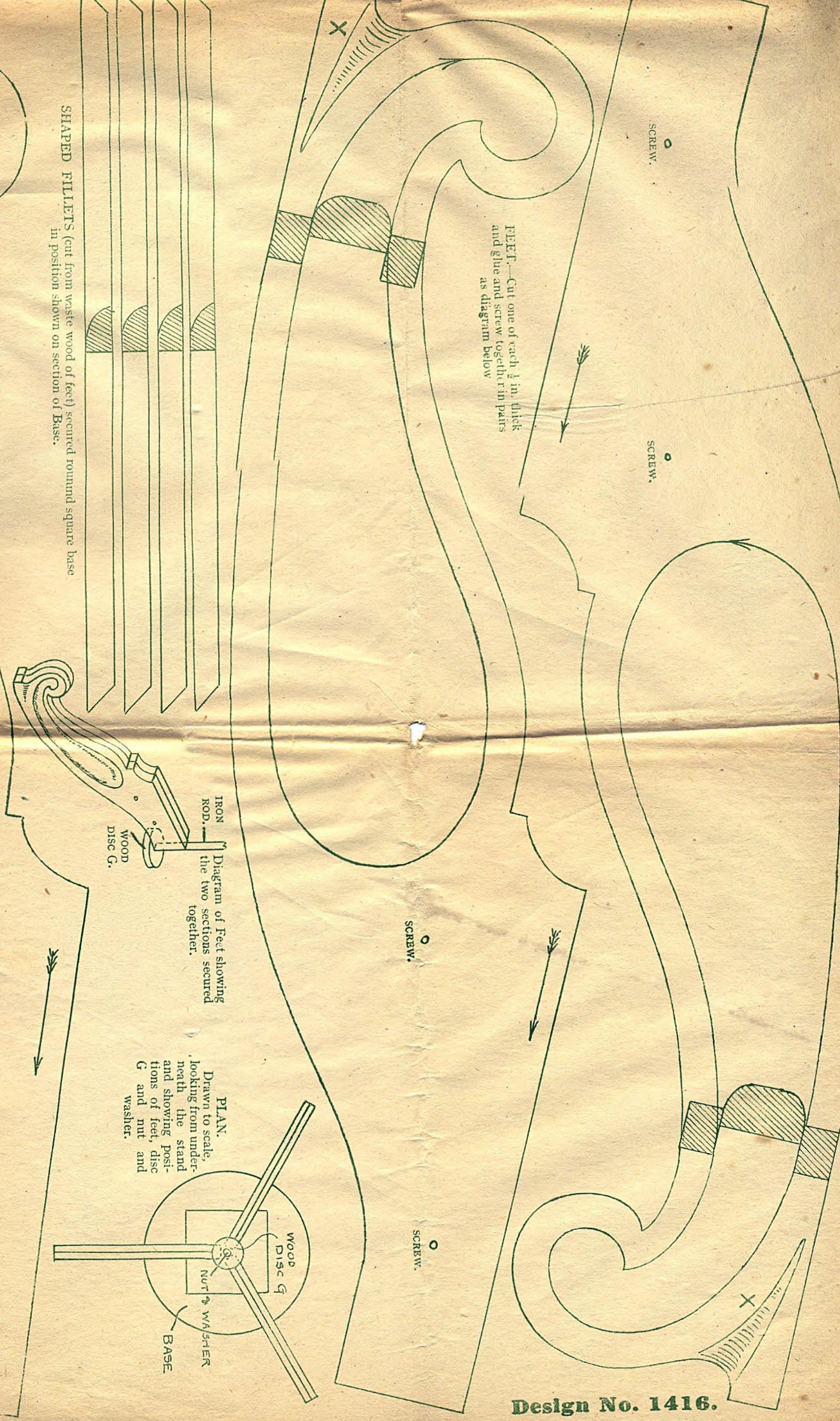


CAP.
(Quarter only shown.)
This portion is made
up from two sections.
The circles may be
drawn direct on to the
wood and cut out and
fitted according to the
section shown under.
The top layer will not
have the antefretted
layer shown by the
line A and B. See the
section.

The decoration at X on each of the feet should
be carved in each pair are complete and
fitted together. The hollowed effect can be
worked with the carving tool to the lines shown.



SHAPED FILLETS (cut from waste wood of feet) secured round square base
in position shown on section of Base.



Design No. 1416.